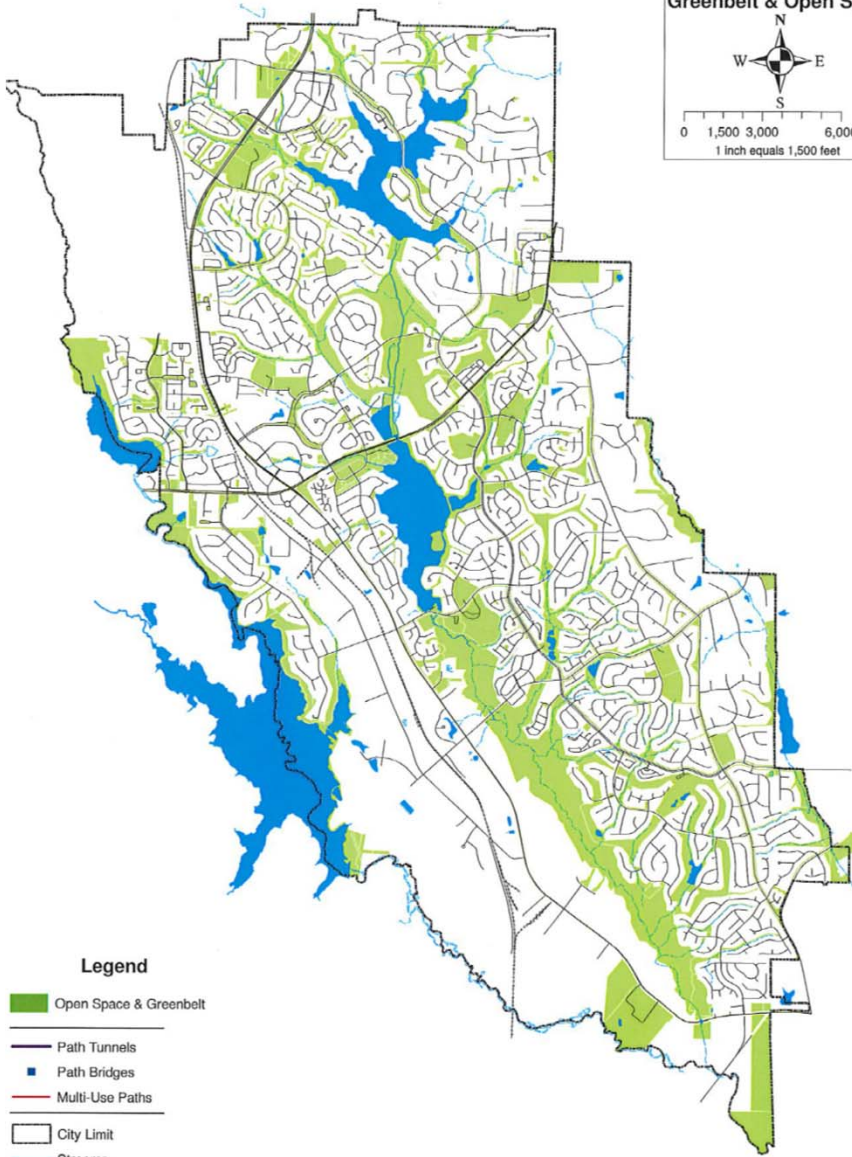


Greenbelt. *An area of land owned by the city which shall remain undisturbed, insofar as possible, from its natural state to form a screen or buffer.*

*Approximately 25%
(3,669 acres) of Total City
Land Area in City-Owned
Greenbelt and Open
Space*

**Peachtree City,
Greenbelt & Open Space**



Legend

- Open Space & Greenbelt
- Path Tunnels
- Path Bridges
- Multi-Use Paths
- City Limit
- Streams
- Lakes
- railroad



Sec. 1133. - Removal of trees and vegetation within designated buffers and greenbelts, prohibited.

Clearing, thinning and/or removal of any trees or vegetation within designated natural buffers, undisturbed buffers, tree save and landscape buffers, or any protected area on residential lots ***is strictly prohibited*** without first obtaining approval from the city landscape architect.

Clearing, thinning and/or removal of any vegetation within ***city-owned greenbelts is strictly prohibited***. Each removed tree shall be considered a separate offense and will be subject to a citation and/or fine as determined by the judge of the municipal court. In addition to the citation and/or fine, the person responsible for clearing, thinning or removal of vegetation within a city-owned greenbelt shall be ***required to replace the total caliper inches of vegetation removed to assist in re-naturalizing the disturbed areas adjacent to their property***. A detailed plant list of all material to be planted must be submitted to the city landscape architect for approval prior to installation, and all plant material must be guaranteed for a period of no less than two years from the date of final acceptance by the city.

ISSUES

- Approval (verbal vs. written)
- Notices of Violation (NOV) vs. Citations
- Penalties (no minimum fine)

Sec. 1133. - Removal of trees and vegetation within designated buffers and greenbelts, prohibited.

Clearing, thinning and/or removal of any trees or vegetation within designated natural buffers, undisturbed buffers, tree save and landscape buffers, or any protected area on residential lots *is strictly prohibited* without first obtaining **written approval and associated permits** from the **Planning and Development Department**.

Clearing, thinning and/or removal of any vegetation within **city-owned greenbelts** is *strictly prohibited*. Each removed tree shall be considered a separate offense and will be subject to a citation **from Code Enforcement to appear in Municipal Court and a fine of not less that** *(Council consensus on 1/19 was \$500 per tree)*.

In addition to the citation **and** fine, the person responsible for clearing, thinning or removal of vegetation within a city-owned greenbelt shall be *required to replace the total caliper inches of vegetation removed to assist in re-naturalizing the disturbed areas adjacent to their property*. A detailed plant list of all material to be planted must be submitted to the **Planning and Development Department** for approval prior to installation, and all plant material must be guaranteed for a period of no less than two years from the date of final acceptance by the city.

QUESTIONS